

SECAP® QUIKJET™

THE ADDRESSING AND IMAGING SOLUTION

The QuikJet system features outstanding performance with production speeds of up to 30,000 pieces per hour at 600 dpi x 150 dpi, with the ability for print resolutions up to 600 dpi x 600 dpi at lesser quantities. The modular design offers flexibility in system configurations to meet your addressing & imaging requirements.

KEY BENEFITS:

- High quality vacuum transport for precision inkjet printing
- Handles a wide variety of media, both size and thickness
- Flexibility in customizing the system based on your needs
- Wide belts for accurate media delivery
- Easy serviceability
- Reduces labor costs

INK OPTIONS FOR THE QUIKJET SYSTEM

Secap offers a variety of HP inks to handle a wide range of media, including nearly every type of coated or over coated substrate. HP technology provides a highly efficient, easy to use cost-effective ink cartridge system.



SIMS: Secap Ink Management System

One of the most reliable and self-contained ink delivery systems on the market. Fully proven in industrial packaging, this solution offers the following advantages:

- Reduced ink costs
- Less operator intervention and less down time
- Built-in ink monitor
- Choice of inks for different substrates



Picaso™ Ink

The best choice for printing on aqueous and over coated media.



HP Versatile Black Ink

Use for high speed printing on porous or coated stock.



Spot Colors

Use for advertisements, personalization and endorsements. Color choice of yellow, blue, green, or red.

SECAP FINANCE

Take advantage of our convenient leasing options available through Secap Finance. The flexible options available will allow you to let your equipment pay for itself as you use it over time.

ABOUT US

Secap is a leading supplier of state-of-the-art mailing solutions designed to increase productivity, improve efficiency and lower costs at all touch points in the mailstream. For over 40 years, we have been providing the highest level of product knowledge and unparalleled industry experience that businesses count on.

WHAT WE OFFER YOU

Our customers enjoy expert sales and service support and have access to the highest quality and most reliable equipment available on the market today. Our network of highly trained sales & service specialists are ready to work with you to find the best solution for your application needs. Whether you have a large or small mailing operation, Secap has the addressing and mailing system to fit your needs and budget.

Secap's products are offered through an extensive network of trained and authorized dealers. Please contact us today to learn more about how we can help streamline and improve your mailing operations.



10 Clipper Road
West Conshohocken, PA
19428-2721
800.523.0320
610.825.6205
610.825.1397 (fax)
www.secap.com

Reorder #40455 6/09

SECAP® QuikJet™ System TECHNICAL SPECIFICATIONS

Maximum Speed Per Hour:

Up to 30,000/hr. super draft
Up to 22,000/hr. draft
Up to 15,000/hr. letter
Up to 7,500/hr. executive

Print Area/Configurations Available:

QuikJet 36: 3" of print using (2) 1-1/2" print banks, or 4.5" of print using (1) 1-1/2" and (1) 3" print banks

QuikJet 56: 3" of print using (2) 1-1/2" print banks, or 4.5" of print using (1) 1-1/2" and (1) 3" print banks or 6" of print using (2) 3" print banks

Media Size:

Width: 3" to 15"
Length: 2" to 14"
Thickness: From .002" to .75"

Print Resolution:

150, 200, 300, 600 dpi horizontal; 600 dpi vertical

Print Modes:

Super Draft, Draft, Letter, Executive

Fonts:

Internal: 12 scaleable fonts; 4 to 30 pt.
Unlimited True Type fonts downloadable

Barcode:

USPS®, PLANET Code® Barcode, Intelligent Mail® Barcode, EAN-13/UPC-A Internal

Interface:

Centronics Parallel

Driver Compatibility:

Windows® 2000, XP, Vista*

Printhead/InkJet Cartridge:

Standard High Resolution - HP; Versatile Black Ink, Picaso™ Ink
Spot Color: Yellow, Blue, Green, Red



Physical Characteristics:

Dimensions:

QuikJet 36: Transport Base: 36"L x 30"W x 32"-36"H
QuikJet 56: Transport Base: 56"L x 30"W x 32"-36"H
Dryer Bases: 20", 30" or 36"L (depending on base) 30"L x 32"-36"H
Feeder: 20"L (friction feed table top) x 24"L x 32"-36"H
High Capacity Feeder: 85" or 121"L x 18"W x 32"-36"H
Conveyor: Standard: 79" or 115"L x 18"W x 32"-36"H

Power:

Printer Base: 110 Vac, 15A
Dryer Base: 220 Vac, 60 Hz, single phase, 30 amp
Plug style: NEMA L6-30P, two pole, three wire
Feeder: 110 Vac, 15A
Conveyor: 110 Vac, 15A

Certification:

TUV

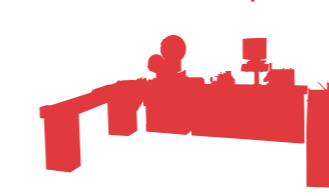
SYSTEM OPTIONS:

Available in various system configurations.

Note: System does not include PC.

Components of the QuikJet System are integrated but are also designed to run independently.

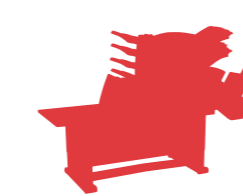
Ask about Secap's complete line of mailstream solutions:



PRINTERS



TABBERS



FOLDERS AND
INSERTERS

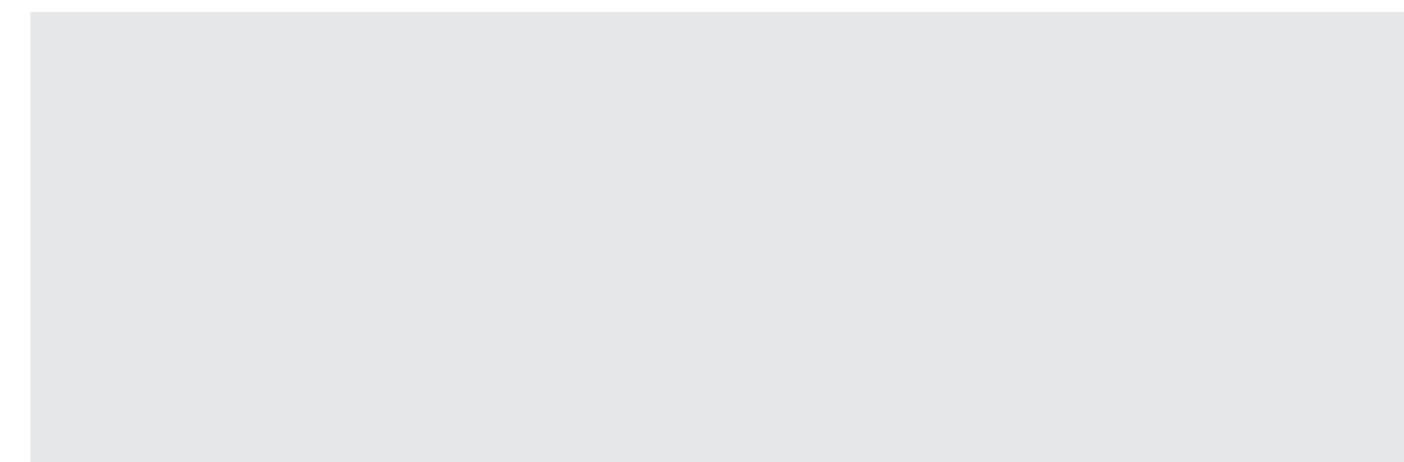


SOFTWARE

Specifications subject to change without notice. Speeds may vary depending on media. Intelligent Mail, PLANET Code, and USPS are registered trademarks owned by the United States Postal Service. HP and the HP logo are registered trademarks owned by Hewlett Packard, Inc. All other trademarks are the property of the respective owners.

*compatible with 32-bit version of Vista.

Available from your authorized and certified Secap dealer.



Contact the dealer above or call 800.523.0320 for a Secap dealer near you.



Mailstream Management and Solutions...

QUIKJET

SECAP® QUIKJET™

INKJET PRINTER AND IMAGER



PRINTERS



TABBERS



FOLDERS AND
INSERTERS



SOFTWARE

HIGH PRODUCTIVITY AND PERFORMANCE

The Secap QuikJet mail production system features high quality HP technology, a heavy duty transport, accurate feeding and in-line drying capabilities at an affordable price. Simple operation and modular architecture delivers flexibility in system configurations that can be tailored for your particular print environment. The QuikJet system has been engineered and built from the ground up and is the ultimate solution to meet your addressing and imaging requirements.

FAST, FLEXIBLE AND FUNCTIONAL

The QuikJet system allows you to customize your inkjet printing and imaging system with its modular components. Choose from a 36" or 56" printer base; 20", 30", or 36" dryer base size, table top or stand alone feeder, and standard or high capacity conveyor in lengths of 6' or 9'. The entire system synchronizes through the integrated control panel providing maximum control and allowing one person operation to keep costs low. The QuikJet system runs at production speeds up to 30,000 envelopes per hour at 600 dpi x 150 dpi.

DETAILS

1. High Capacity, Synchronized Feeder

The UltraFeed™ high capacity feeder is designed to maximize productivity by reducing the number of times the feeder must be loaded. Handles a wide variety of media types.

2. Heavy Duty Vacuum Transport

Control the speed of the entire system with a turn of a single master dial. With the flip of a switch, the user can add vacuum control to the transport for handling difficult media.

The transport comes standard with three 2" wide belts that have a profile on the underside and rides in a groove on the transport deck. This eliminates shifting belts and offers stable media delivery. Optional belts available.

Configure your system with 3", 4.5" or 6" of print. Simple printhead bridge design for fast job set-up and changeover.

3. Dryer

Speeds drying of printed media in large volume runs and assures clean, crisp, professional work. Various dryers and base sizes available based on your drying needs.

4. Conveyor

Choose a standard conveyor (shown) or UltraSort™ conveyor, 6' or 9' lengths. The conveyor provides additional drying time and assures neat, accurate stacking of finished pieces.



QuikJet system shown with 36" printer base, 30" dryer base with 4000Watt Dryer, 6' UltraFeed Feeder and 6' Standard Conveyor.

CUSTOMIZE YOUR QUIKJET SYSTEM



The QuikJet 36" shown with 1500IJ friction feeder on 20" stand, 4.5" print and 2000 Watt dryer on 20" base.



QuikJet 56 configured with 4.5" of print and 56" in length.



QuikJet 36 configured with 4.5" of print.



Dryer base available in 20", 30", or 36" length dependent upon your requirements.



HIGH QUALITY INKJET PRINTING & IMAGING

The QuikJet system's innovative design offers professional mailers a flexible and cost effective solution that will meet the most demanding requirements for addressing and imaging. You can expect the highest level of performance and quality with extremely reliable operation maximizing productivity.

- Simplified printhead bridge design offers easy set up and quick job changeover
- Modular construction for flexibility and maximum functionality
- 3/8" clear anodized aluminum transport deck dissipates heat quickly
- Minimal deck vibration for sharper print image and resolution
- Bi-directional capable, can be configured to run left to right or right to left
- Simple design for faster service and increased productivity

PRINTER BASE OPTIONS

The QuikJet vacuum transport offers high quality and durable construction for long life and performance. The heavy duty transport is available in 36" or 56" base lengths. The system comes standard with three 2" wide belts that track on the transport deck for precise media registration and improved print stitching.

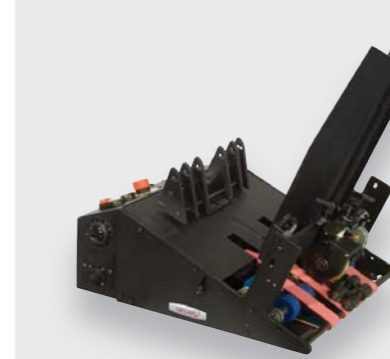
The Quikjet system can be configured with 3", 4.5" or 6" of print (6" available only on the Quikjet 56). Excellent access to the printheads and print cartridges with the simplified printhead bridge design that offers unobstructed access for printhead adjustments or cartridge maintenance.

DRYER AND BASE OPTIONS

Configure the QuikJet system with a 2000W, 4000W or 9000W dryer to meet your specific ink drying requirements. The 4000W dryer is an excellent selection for various drying situations. The dryer automatically synchronizes with the printer for optimal performance and safety.

Select a heavy duty dryer base available in 20", 30" or 36" lengths to mount your dryer. Integrates to the printer base. The dryer module is designed with high temperature heat resistant belts engineered to maintain the integrity and life of the belts.

ACCURATE MEDIA HANDLING



1500IJ friction feeder available with or without stand.



UltraFeed™ high capacity feeder available in 6' and 9' lengths.

The UltraFeed high capacity feeder delivers maximum capacity handling up to 4,500 #10 envelopes (9' UltraFeed) at a time. Having an inline feeder reduces operator intervention and increases productivity. The feeders synchronize with the vacuum transport base for increased efficiency.

STACKING OF FINISHED MATERIAL



Standard high production conveyor/stacker.



Close up of the UltraSort™ conveyor. Automatically creates tray breaks for improved separation and material handling.

QuikJet conveyors improve material handling and air drying of addressed material. Choose either the standard conveyor or UltraFeed conveyor. Both conveyors feature a wide belt design to handle glossy and coated stock at high speeds for superior material handling. Available in either 6' or 9' lengths.

TABBING OF OPEN ENDED MEDIA



High capacity production tabber.

Add a heavy duty production Tabber-Labeler-Affixer to complete your mail-stream process with an in-line or off-line production tabber. Accurate, consistent placement of single, double or triple tabs on the left or right side of your mail piece. Configuration solutions available for toe and heel tab requirements.