

# FPI 6600-2



**POWERFUL, PRODUCTIVE,  
INTUITIVE.**

# FPI 6600-2

## FOLDER INSERTING SYSTEM

The FPI 6600-2 inserting system offers the highest performance and a range of additional features and components optimally configured for processing larger quantities and more complex applications. The FPI 6600-2 can be set up according to the users individual needs to perform almost any mail processing task.

- ▶ In its maximum configuration, 2 MaxiFeeders and the high-capacity document feeder, it is possible to load 3,125 sheets of paper. The optional high-capacity envelope hopper, which holds up to 1,000 envelopes, provides a constant supply of envelopes for any job.
- ▶ The high-capacity vertical stacker and side exit comes as standard equipment. This configuration especially lends itself to the addition of an optional conveyor with a capacity of 1,000 finished envelopes.
- ▶ The system can be equipped with a VersaFeeder™ for feeding thicker documents and BRE envelopes.
- ▶ The 10.4" super bright color touchscreen guides the user with easy-to-understand, intuitive instructions and graphic symbols through all job processes.

### 9 High-Capacity Vertical Stacker

Holds up to 500 finished envelopes and keeps the print order of your documents.

### 8 10.4" Super Bright Color Touchscreen

Stores up to 50 programmed jobs plus the convenience of automatic job setup for new jobs. Simply load the documents in the feeders, load the empty carrier envelopes and press 'Automatic' and the 6600i does the rest.

### 5 IntelliDeck™

Divert before folding based on various criteria.

### 10 Side Exit

Holds either 500 finished envelopes or with the optional exit conveyor 1,000 envelopes and reverses the print order of your documents.

### 11 Envelope Hopper

Holds up to 500 carrier envelopes. The optional High-Capacity Envelope Hopper holds up to 1,000 carrier envelopes.

### 7 VersaFeeder™

Processes thin or thick media. Used as a high-capacity insert and business reply envelope feeder. Top load/bottom feed, load-on-the-fly continuous processing.



## FlexFeed Tower Station



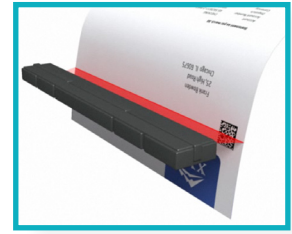
The FPI 6600-2 can come equipped with a three-station FlexFeed tower with the high-capacity document feeder. Two MaxiFeeders with the high capacity document feeder allows for up to 3,125 documents to be loaded at one time. The FlexFeed™ Tower provides flexibility and productivity to your mailroom.

## High-capacity Envelope Hopper



The optional High-Capacity Envelope Hopper provides a conveyance device with a capacity of up to 1,000 carrier envelopes at a time. This load-on-the-fly envelope hopper provides the ultimate productivity setup.

## Contact Image Scanner



The Contact Image Scanner (CIS) is the hardware device that reads multiple types of document intelligence. Whether you use Optical Mark Recognition (OMR), Linear or 1D barcodes (BCR), 2D Data Matrix barcodes, or Optical Character Recognition (OCR), a single CIS can read one or more of these document intelligence types. The CIS provides the ultimate application of flexibility and security for your regulated and sensitive applications.

### 12 FlexFeed™ Tower

Customizable and upgradeable from 2 to 6 stations.



#### 1 High-Capacity Document Feed Tray

Holds up to 725 sheets, with automatic document separation.

#### 2 MaxiFeeders

Up to two on any system, each holding up to 1,200 sheets or 325 business reply envelopes.

#### 3 Accumulator

Finished mail piece will be in page order and nicely collated before being straightened and folded. Accumulate before folding for a nice, crisp, straight fold every time.

#### 6 PowerFold™ 10

Folds up to 10 sheets of 20lb. paper.

#### 4 Contact Image Scanner

One reading hardware device that reads 1D/linear and 2D data matrix barcodes, optical marks (OMR) and Optical Character Recognition (OCR) for secure processing of variable paged sets.



From design and manufacturing to packaging and shipping, our folder inserters are environmentally conscious and reduce their carbon footprint.



FPI 6600-2

**Technical Data**

Feeder stations	up to 7
Maximum cycles per hour	4,300
Folding capacity with sheets of 20lb. paper	up to 10
Job memory capacity	50
Dimensions (approx.) (W x L x H)	18.1" x 59.1" x 32.3"
Weight (3-4 stations)	274 lbs.
Noise emission in dB (A) (REF: ISO 11202)	< 70

**Documents**

Standard feeder capacity (up to 6)	325
High capacity feeder	725
Height/width	3.5" to 14" x 5.1" to 9.5"
Max thickness	2.0 mm

**Envelopes**

Capacity	500-1,000
Height/width	3.5" to 6.38" x 6.3" to 9.7"

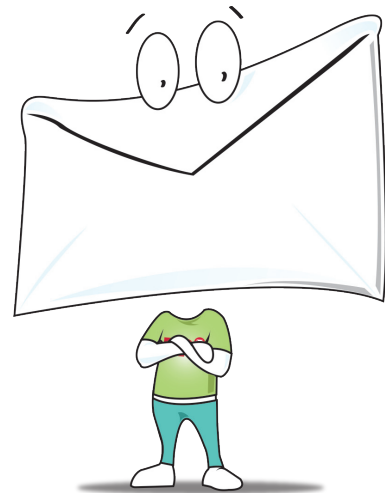
**Functions**

Automatic Job Setup	yes
Feeder Swap Linking	yes
Process stapled sets	yes
Collate sheets before folding	yes
Bottom & middle addresses	optional
Folds: C, V, Z, Double-V, No-fold	yes
Short-fold	optional
Piece counter	yes
Optical Marks Reading (OMR)	optional
Bar Code Reader (BCR)	optional
2D Data Matrix (2D BCR)	optional
Optical Character Recognition (OCR)	optional
Divert before folding	yes
Divert after inserting	yes
Operator adjustable insert fingers	yes
Secure n' Feed Double document detector	yes
Secure n' Sert document thickness detector	yes

**Envelope exit**

High-capacity #10, 6x9	500
High-capacity exit conveyor (optional)	1,000
Conveyor collector C5/6, 1 x A4, multiple fol	1,000

Specifications subject to change



**FP Frankie says,**  
 "Sit back, relax, have a cup of coffee while the FPI 6600-2 coasts through your large mailings."



FP Mailing Solutions is an authorized partner of the National Breast Cancer Foundation. FP is committed to supporting this cause because we all know someone affected by this disease. In addition to contributing to NBCF directly, we hold regular fundraisers and encourage our employees and customers to express their support.

